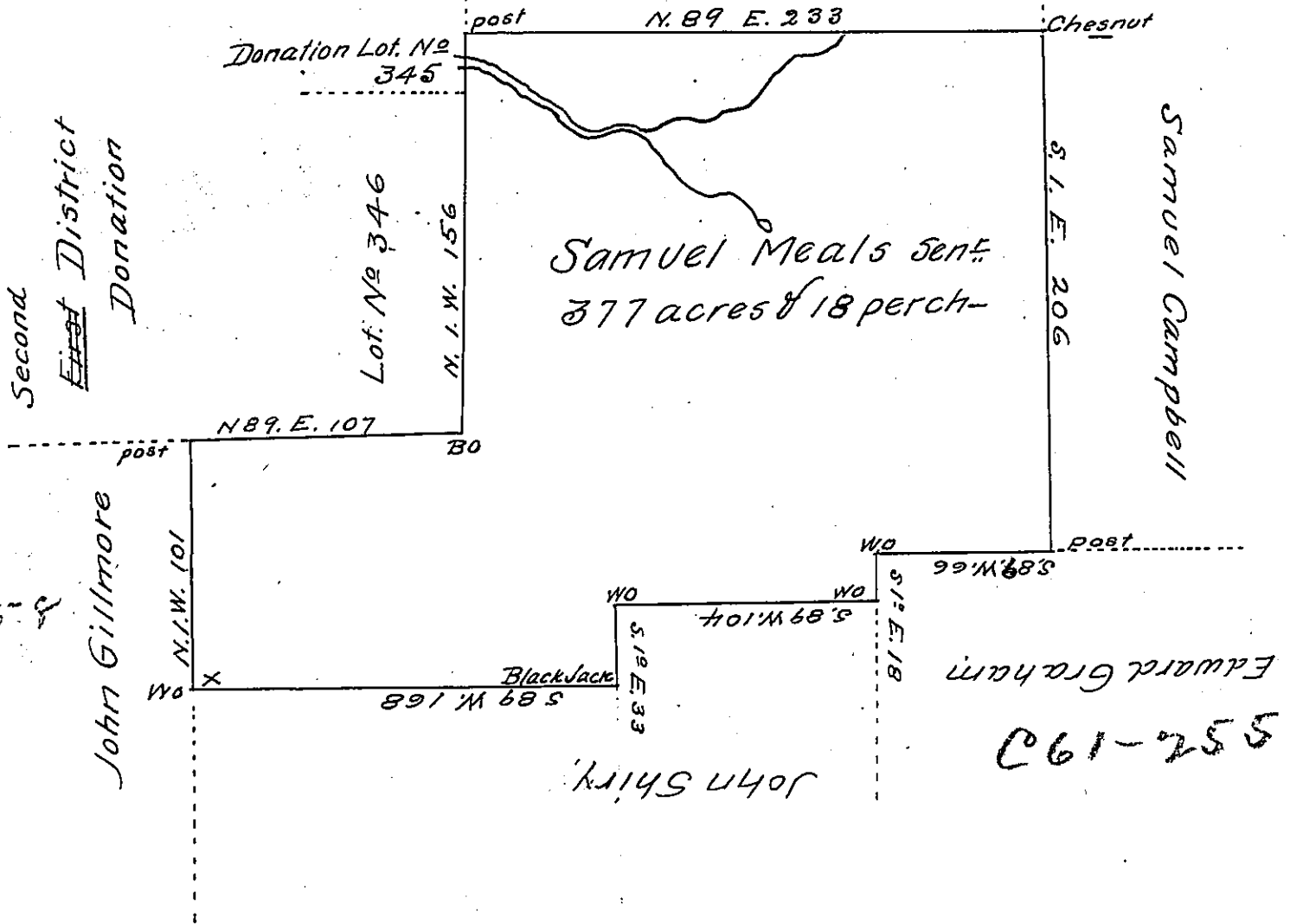


C 32-101

John Christy



C 83-5-8

552-190

Surveyed to Samuel Meals sent the 15 day of November 1813 in pursuance of his improvement and actual settlement Containing Three hundred Seventy seven acres & Eighteen perches with the allowance. Situate on the Waters of Slippery rock Creek in Parker Township Butler County

Thos Graham D.S.

To Andrew Porter Esq  
 Surveyor Genl Penna

Note. The above land is not Claimed by Warrant or otherwise to the best of my belief and knowledge

Thos Graham

IN TESTIMONY that the above is a copy of the original remaining on file in the Department of Internal Affairs of Pennsylvania, made conformably to an Act of Assembly approved the 16th day of February, 1833, I have hereunto set my Hand and caused the Seal of said Department to be affixed at Harrisburg, this twenty-ninth day of December 1905

*James D. Brown*  
 Secretary of Internal Affairs.